

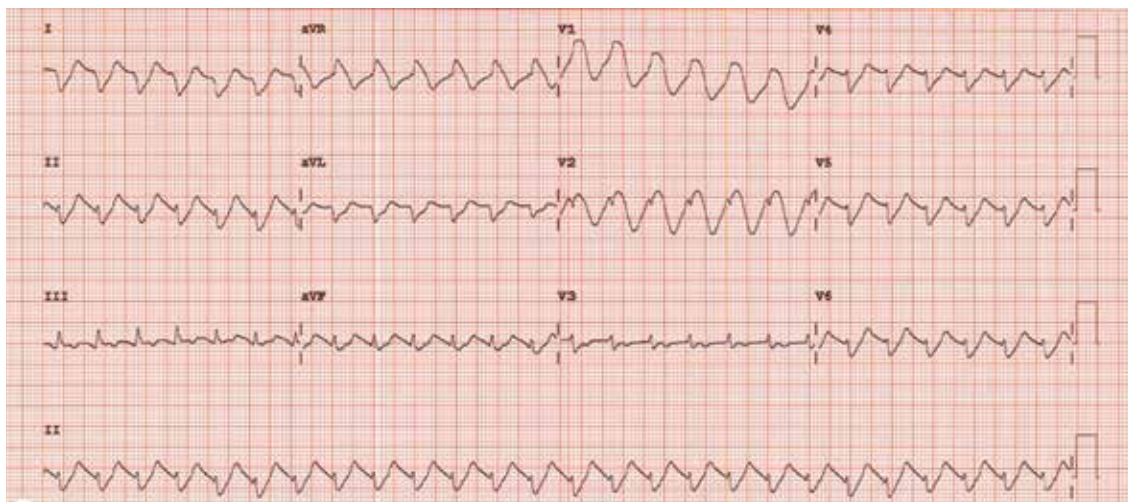
**FARAYI MBUVAH, MD**  
Department of Anesthesiology,  
Henry Ford Hospital, Detroit, MI

**FRUNZE PETROSYAN, MD**  
Department of Internal Medicine,  
Cleveland Clinic

**NIROSSHAN THIRUCHELVAM, MD**  
Department of Internal Medicine,  
Cleveland Clinic

**GAURAV KISTANGARI, MD**  
Department of Hospital Medicine,  
Cleveland Clinic

## Electrocardiographic changes in amitriptyline overdose



**FIGURE 1.** The 12-lead electrocardiogram shows regular wide-complex tachycardia with a ventricular rate of 157 beats/min, a QRS duration of 198 msec, a corrected QT interval of 505 msec, and a QRS axis of +179 degrees. Note the negative QRS complexes in leads I and aVL and the R wave amplitude greater than 3 mm in aVR, features typical of amitriptyline overdose.

**Blood pressure**  
64/22 mm Hg  
**Heart rate** 121  
**Respirations** 14  
**O<sub>2</sub> sat** 88%  
on room air

**A** 49-YEAR-OLD WOMAN WITH a history of depression, bipolar disorder, and chronic back pain was brought to the emergency department unresponsive after having taken an unknown quantity of amitriptyline tablets.

On arrival, she was comatose, with a score of 3 (the lowest possible score) on the 15-point Glasgow Coma Scale. Her blood pressure was 65/22 mm Hg, heart rate 121 beats per minute, respiratory rate 14 per minute, and oxygen saturation 88% on room air. The rest of the initial physical examination was normal.

She was immediately intubated, put on mechanical ventilation, and given an infusion of a 1-L bolus of normal saline and 50 mmol (1 mmol/kg) of sodium bicarbonate. Norepinephrine infusion was started. Gastric lavage was not done.

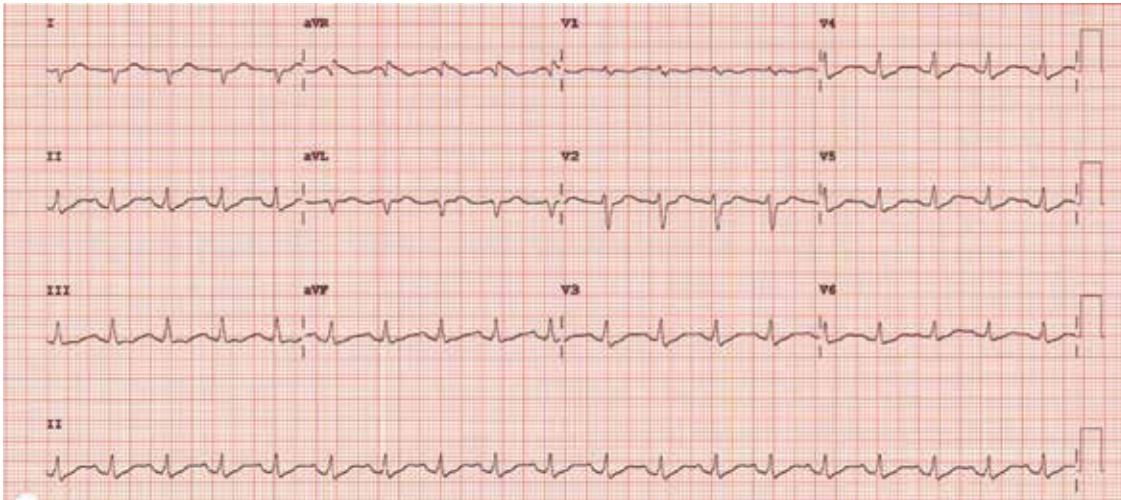
doi:10.3949/cjcm.82a.13135

Results of initial laboratory testing showed a serum potassium of 2.9 mmol/L (reference range 3.5–5.0) and a serum magnesium of 1.6 mmol/L (1.7–2.6), which were corrected with infusion of 60 mmol of potassium chloride and 2 g of magnesium sulfate. The serum amitriptyline measurement was ordered at the time of her presentation to the emergency department.

Arterial blood gas analysis showed:

- pH 7.15 (normal range 7.35–7.45)
- P<sub>a</sub>CO<sub>2</sub> 66 mm Hg (34–46)
- P<sub>a</sub>O<sub>2</sub> 229 mm Hg (85–95)
- Bicarbonate 22 mmol/L (22–26).

The initial electrocardiogram (ECG) (**Figure 1**) showed regular wide-complex tachycardia with no definite right or left bundle branch block morphology, no discernible P waves, a QRS duration of 198 msec, right axis



**FIGURE 2.** The patient's electrocardiogram 1 minute after infusion of 100 mmol of sodium bicarbonate shows sinus tachycardia with a ventricular rate of 113 beats/min, a QRS duration of 116 msec, a corrected QT interval duration of 478 msec, and a QRS axis of +112 degrees. Note the marked narrowing of the QRS complexes and the reduction of the R wave amplitude to less than 3 mm in lead aVR.

deviation, and no Brugada criteria to suggest ventricular tachycardia.

She remained hypotensive, with regular wide-complex tachycardia on the ECG. She was given an additional 1-L bolus of normal saline and 100 mmol (2 mmol/kg) of sodium bicarbonate, and within 1 minute the wide-complex tachycardia resolved to narrow-complex sinus tachycardia (**Figure 2**). At this point, an infusion of 150 mmol/L of sodium bicarbonate in dextrose 5% in water was started, with serial ECGs to monitor the QRS duration and serial arterial blood gas monitoring to maintain the pH between 7.45 and 7.55.

### ■ TRANSFER TO THE ICU

She was then transferred to the intensive care unit (ICU), where she remained for 2 weeks. While in the ICU, she had a single recurrence of wide-complex tachycardia that resolved immediately with an infusion of 100 mmol of sodium bicarbonate. A urine toxicology screen was negative, and the serum amitriptyline measurement, returned from the laboratory 48 hours after her initial presentation, was 594 ng/mL (reference range 100–250 ng/mL). She was eventually weaned off the norepinephrine infusion after 20 hours, the sodium bicarbonate infusion was discontinued after 4 days, and she was taken off mechanical ventilation

after 10 days. Also during her ICU stay, she had seizures on day 3 and developed aspiration pneumonia.

From the ICU, she was transferred to a regular floor, where she stayed for another week and then was transferred to a rehabilitation center. This patient was known to have clinical depression and to have attempted suicide once before. She had recently been under additional psychosocial stresses, which likely prompted this second attempt.

She reportedly had no neurologic or cardiovascular sequelae after her discharge from the hospital.

### ■ AMITRIPTYLINE OVERDOSE

Amitriptyline causes a relatively high number of fatal overdoses, at 34 per 1 million prescriptions.<sup>1</sup> Death is usually from hypotension and ventricular arrhythmia caused by blockage of cardiac fast sodium channels leading to disturbances of cardiac conduction such as wide-complex tachycardia.

Other manifestations of amitriptyline overdose include seizures, sedation, and anticholinergic toxicity from variable blockade of gamma-aminobutyric acid receptors, histamine 1 receptors, and alpha receptors.<sup>2</sup>

Of the various changes on ECG described with amitriptyline overdose, sinus tachycardia

**In amitriptyline overdose, sinus tachycardia is the most common finding on ECG**



## 2015 Primary Care Women's Health: Essentials and Beyond

September 10 – 11, 2015

Landerhaven by Executive Caterers  
Mayfield Heights, OH

### You Will Want To Attend This Year's Primary Care Women's Health

The field of women's health is rapidly changing with the advances in research and the introduction of novel therapies. General practitioners are expected to be the expert on all major treatments and medications that their patients may inquire about. This course addresses some potential knowledge and practice gaps in women's health that may exist among primary care providers regarding this dynamic field. A review of current data from studies and their application to clinical practices will accompany a highlight of best practices that review the latest therapies, procedures, and diagnostics in women's health.

This activity has been approved for  
AMA Category 1 Credit™.

Register Today!  
[ccfcme.org/womenshealth](http://ccfcme.org/womenshealth)



## AMITRIPTYLINE OVERDOSE

is the most common. A QRS duration greater than 100 msec, right to extreme-right axis deviation with negative QRS complexes in leads I and aVL, and an R-wave amplitude greater than 3 mm in lead aVR are indications for sodium bicarbonate infusion, especially in hemodynamically unstable patients.<sup>3</sup> Sodium bicarbonate increases the serum concentration of sodium and thereby overcomes the sodium channel blockade. It also alkalinizes the serum, favoring an electrically neutral form of amitriptyline that binds less to receptors and binds more to alpha-1-acid glycoprotein, decreasing the fraction of free drug available for toxicity.<sup>4</sup>

In patients with amitriptyline overdose, wide-complex tachycardia and hypotension refractory to sodium bicarbonate infusion can be treated with lidocaine, magnesium sulfate, direct-current cardioversion, and lipid resuscitation.<sup>5,6</sup> Treatment with class IA, IC, and III antiarrhythmics is contraindicated, as they block sodium channels and thus can worsen conduction disturbances. ■

### REFERENCES

1. Henry JA, Alexander CA, Sener EK. Relative mortality from overdose of antidepressants. *BMJ* 1995; 310:221–224.
2. Shannon M, Merola J, Lovejoy FH Jr. Hypotension in severe tricyclic antidepressant overdose. *Am J Emerg Med* 1988; 6:439–442.
3. Liebelt EL, Francis PD, Woolf AD. ECG lead aVR versus QRS interval in predicting seizures and arrhythmias in acute tricyclic antidepressant toxicity. *Ann Emerg Med* 1995; 26:195–201.
4. Sayniuk BI, Jhamandas V. Mechanism of reversal of toxic effects of amitriptyline on cardiac Purkinje fibres by sodium bicarbonate. *J Pharmacol Exp Ther* 1984; 231:387.
5. Kiberd MB, Minor SF. Lipid therapy for the treatment of a refractory amitriptyline overdose. *CJEM* 2012; 14:193–197.
6. Harvey M, Cave G. Case report: successful lipid resuscitation in multidrug overdose with predominant tricyclic antidepressant toxidrome. *Int J Emerg Med* 2012; 5:8.

ADDRESS: Farayi Mbuva, MD, Department of Internal Medicine, Fairview Hospital, 18101 Lorain Avenue, Fairview Park, OH 44111; e-mail: [mbuvahfj@gmail.com](mailto:mbuvahfj@gmail.com)