

REVIEW ARTICLE

DISORDERS OF FLUIDS AND ELECTROLYTES

Julie R. Ingelfinger, M.D., *Editor*

Disorders of Plasma Sodium — Causes, Consequences, and Correction

Richard H. Sterns, M.D.

HUMAN CELLS DWELL IN SALT WATER. THEIR WELL-BEING DEPENDS ON the ability of the body to regulate the salinity of extracellular fluids. By controlling water intake and excretion, the osmoregulatory system normally prevents the plasma sodium concentration from straying outside its normal range (135 to 142 mmol per liter). Failure of the system to regulate within this range exposes cells to hypotonic or hypertonic stress. This review considers the causes and consequences of an abnormal plasma sodium concentration and offers a framework for correcting it.

From the University of Rochester School of Medicine and Dentistry and Rochester General Hospital, Rochester, NY. Address reprint requests to Dr. Sterns at Rochester General Hospital, 1425 Portland Ave., Rochester, NY 14621, or at richard.sterns@rochesterregional.org.

N Engl J Med 2015;372:55-65.

DOI: 10.1056/NEJMra1404489

Copyright © 2015 Massachusetts Medical Society.

PLASMA SODIUM CONCENTRATION AND EXTRACELLULAR TONICITY

The plasma sodium concentration affects cell volume. The term “tonicity” describes the effect of plasma on cells — hypotonicity makes cells swell and hypertonicity makes them shrink. Hyponatremia always indicates hypertonicity. Hyponatremia usually indicates hypotonicity, but there are exceptions (e.g., hyperglycemic hyponatremia and pseudohyponatremia) that are not covered in this review.

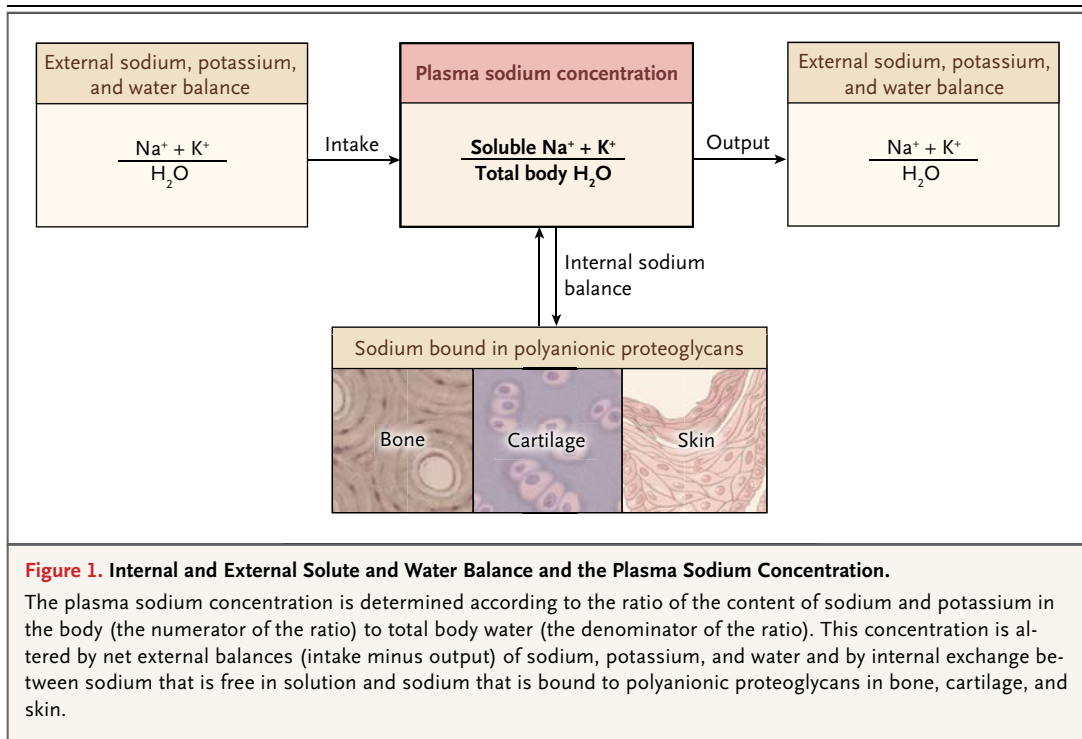
PLASMA SODIUM CONCENTRATION AND THE ELECTROLYTE AND WATER CONTENT OF THE BODY

Solute concentrations (osmolalities) must be equal inside and outside of cells because water channels (aquaporins) make cell membranes permeable to water.^{1,2} The “sodium pump” (Na⁺/K⁺-ATPase) functionally excludes sodium from cells, exchanging it for potassium by means of active transport. Although sodium is largely extracellular and potassium is intracellular, body fluids can be considered as being in a single “tub” containing sodium, potassium, and water, because osmotic gradients are quickly abolished by water movement across cell membranes. As such, the concentration of sodium in plasma water should equal the concentration of sodium plus potassium in total body water. This theoretical relationship was validated empirically by Edelman et al.,³ who used isotopes to measure exchangeable body cations and water.

Edelman and colleagues described the relation between these variables with the following equation:

$$[\text{Na}^+] \text{ in plasma } \text{H}_2\text{O} = 1.11 \times \frac{(\text{Na}_e^+ + \text{K}_e^+)}{\text{total body } \text{H}_2\text{O}} - 25.6,$$

where Na_e⁺ is exchangeable sodium, K_e⁺ exchangeable potassium, and H₂O water. This equation has an intercept (−25.6); the regression line relating plasma sodium



to the ratio of exchangeable ($\text{Na}^+ + \text{K}^+$) to total body water does not pass through zero because not all exchangeable sodium is free in solution.⁴ A substantial amount of sodium is bound to large polyanionic macromolecules called proteoglycans, which make up the ground substance of bone, connective tissue, and cartilage (Fig. 1).¹ The sodium concentration of cartilage is nearly twice that of plasma. The osmotic force created by the high sodium concentration (about 40 mm Hg for every difference in concentration of 1 mmol per liter) maintains the high water content in the tissue, allowing it to withstand pressures that can exceed 20,000 mm Hg during exercise.⁵

When it became known that much of the sodium in the body is bound to bone, cartilage, and connective tissue, it was hypothesized that these tissues could serve as sodium reservoirs, taking up or releasing sodium in response to the needs of the body.⁶ Despite early evidence supporting the concept of a sodium reservoir,⁷⁻⁹ this theory lost favor¹⁰ and was not pursued for half a century. However, the past decade has seen renewed interest in stored sodium.¹¹ In patients

who consume high-salt diets, sodium can accumulate in the body, seemingly disappearing without a change in the plasma sodium concentration, body weight, or extracellular fluid volume.¹² Sodium, potassium, and water balance do not always account for changes in the plasma sodium concentration during recovery from hyponatremia.¹³ Proteoglycans in skin serve as a sodium reservoir, and the number of negative charges available to bind sodium varies in response to the sodium concentration of interstitial tissue.¹⁴⁻¹⁶ In experiments in rats, chronic hyponatremia has been shown to be a more potent cause of osteopenia than vitamin D deficiency, and loss of sodium from bone exceeded the loss of calcium from bone. The activity of osteoclasts is increased in chronic hyponatremia owing to a direct effect of sodium and possibly vasopressin on these cells.¹⁷

In humans, chronic hyponatremia is associated with osteoporosis and fractures. During extreme-endurance athletic events lasting several hours, bone density decreases measurably, and the decrease in bone density correlates remarkably closely with changes in the plasma sodium concentration.^{17,18}

 PLASMA SODIUM CONCENTRATION
AND TONICITY BALANCE

A simplified version¹⁹ of the equation reported by Edelman et al. is

$$\text{plasma } [\text{Na}^+] = \frac{\text{total body } (\text{Na}^+ + \text{K}^+)}{\text{total body } \text{H}_2\text{O}}$$

The plasma sodium concentration is altered by changes in overall sodium and potassium balance (the numerator of the simplified equation) and water balance (the denominator) (Fig. 1). To understand or roughly predict changes in the plasma sodium concentration, the overall tonicity of the diet and intravenous fluids and the overall tonicity of gastrointestinal fluids, sweat, and urine must be considered. Like the plasma sodium concentration, which is determined by the concentrations of sodium and potassium in body water, the tonicity of these fluids is defined by their concentrations of sodium plus potassium.

It is not possible to predict the effect of administering intravenous fluids on the plasma sodium concentration without considering concurrent urinary losses. The electrolyte concentration (sodium plus potassium) of urine, and not its osmolality (which includes electrolytes, urea, and glucose), determines the effect of urine on the plasma sodium concentration. Urine is hypotonic if its electrolyte concentration is lower than that of plasma; because it is partly composed of electrolyte-free water, excretion of hypotonic urine will increase the plasma sodium concentration. Conversely, urine is hypertonic if its electrolyte concentration is higher than that of plasma; excretion of hypertonic urine will lower plasma sodium concentrations.²⁰

Isosmolar or hyperosmolar urine containing mostly urea (an end product of protein metabolism) may be nearly electrolyte-free.^{20,21} Excretion of urea owing to recovery from azotemia, catabolism, or a high-protein diet will cause hypernatremia unless there is replacement of the free water that has been lost.²² Because it increases excretion of electrolyte-free water, urea has been used to treat hyponatremia.^{23,24}

 SODIUM AND THE BLOOD–BRAIN
BARRIER

Sodium readily crosses systemic capillary membranes through clefts between endothelial cells.²⁵

Consequently, in most tissues, the sodium concentrations of plasma and interstitial fluid are nearly identical, with a small difference created by intravascular albumin.^{1,25} In contrast, brain capillaries have tight endothelial junctions and are lined by astrocytic foot processes, creating a blood–brain barrier that sodium cannot cross (Fig. 2).²⁶ Consequently, an abnormal plasma sodium concentration causes water to enter or leave brain tissue. Because of the confines of the skull, only a small degree of brain swelling or shrinkage is compatible with life.

 REGULATION OF THE PLASMA
SODIUM CONCENTRATION

Since the plasma sodium concentration affects brain volume, it is not surprising that the cell-volume receptors that are responsible for adjusting thirst and vasopressin secretion are located in the brain. Osmoreceptors, which are more accurately called tonicity receptors, are hypothalamic neurons that express transient receptor potential cation channel subfamily vanilloid member 1 (TRPV1) and member 4 (TRPV4) channels on their cell membranes.^{27,28}

Transient receptor potential cation channels belong to a large family of molecules. They were first identified as photoreceptors in fruit flies and were later discovered to serve as receptors for a variety of sensations throughout nature.²⁹ For example, transient receptor potential V (or vanilloid) (TRPV) channels respond to capsaicin, a vanilloid that causes the burning sensation associated with the ingestion of chili peppers. TRPV1, which is a member of the TRPV family of receptors, was identified in mutant *Caenorhabditis elegans* roundworms that did not avoid hyperosmotic environments. Insertion of a mammalian TRPV4 gene into the genome of mutant *C. elegans* roundworms restored normal worm behavior. The TRPV1 gene is required for normal functioning of isolated osmoreceptor neurons, and genetically engineered mice that lack genes for TRPV1 and TRPV4 have abnormal osmoregulation. Polymorphisms in genes encoding the TRPV4 channel have been identified in humans. Healthy aging men who are positive for the TRPV4^{P19S} polymorphism are more likely to have mild hyponatremia than are men without this polymorphism.³⁰

In normal osmoregulation, both thirst and vasopressin secretion are inhibited when the plasma sodium concentration is decreased below 135 mmol

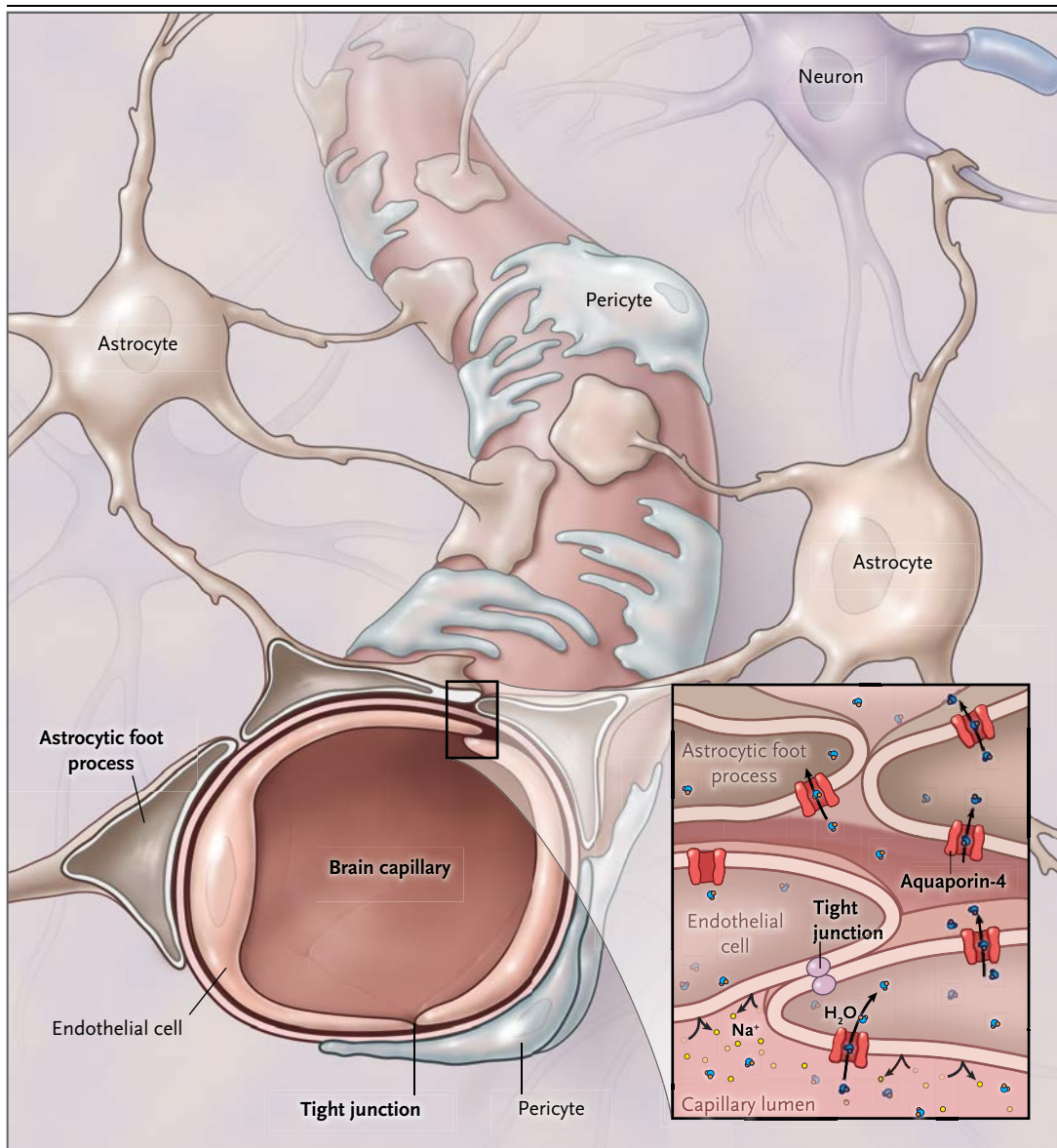


Figure 2. Astrocytes and the Neurovascular Unit.

Brain capillaries have tight junctions and are lined by astrocytic foot processes expressing aquaporin-4 water channels that make them permeable to water but not to sodium. Astrocytes, which are spatially and functionally related to endothelial cells, neurons, pericytes, and microglia, provide the brain with its first line of defense against the osmotic stress caused by sodium disorders.

per liter. In the absence of vasopressin, urine osmolality decreases to as low as 50 mOsm per kilogram. In persons who consume a typical Western diet, with an output of urinary solute of about 900 mOsm daily, a urinary solute concentration of 50 mOsm per liter yields 18 liters of urine (750 ml per hour).²⁰

Although individual responses vary,³¹ vaso-

pressin is usually detectable at a plasma sodium concentration above 135 mmol per liter, and levels of vasopressin increase linearly with increasing sodium levels.³² The hormone may also be secreted in response to circulatory inadequacy,³³ or it may be secreted “inappropriately,” and sometimes ectopically, with no osmotic or hemodynamic stimulus.³⁴ (Vasopressin secretion

without an osmotic or hemodynamic abnormality to account for it is termed “inappropriate.”³⁴) Once secreted, vasopressin binds to its V2 receptor on basolateral membranes of principal cells lining the renal collecting duct.²⁷ In the presence of vasopressin, aquaporins are inserted into the luminal membrane, allowing water to flow out, attracted by the high solute concentration of the surrounding medullary interstitium. When the plasma sodium level increases to approximately 145 mmol per liter, vasopressin levels are normally high enough to result in maximally concentrated urine (about 1200 mOsm per kilogram). The presence of a dilute urine when the plasma sodium concentration is above 145 mmol per liter implies either deficient vasopressin secretion (as in neurogenic diabetes insipidus) or failure of the kidneys to respond to vasopressin (as in nephrogenic diabetes insipidus) (see Case 1 in the Supplementary Appendix, available with the full text of this article at NEJM.org).²⁷

However, even complete diabetes insipidus (with total absence of vasopressin or no tubular response to vasopressin) generally does not cause hypernatremia, because thirst prompts replacement of urinary losses of water.²⁸ Hypernatremia develops if water is unavailable, if the urge to drink is impaired (hypodipsia), or if patients are too young, old, or sick to seek water themselves.³⁵

Maximal dilution of urine prevents hyponatremia unless water intake is extraordinarily large (>1 liter per hour) (e.g., in patients with schizophrenia who drink water compulsively)³⁶ or the rate of urinary solute excretion is extremely low (e.g., in beer drinkers who eat very little).^{20,37} Except in these scenarios, hypotonic hyponatremia is associated with an impaired ability of the body to dilute urine because of diminished sodium transport in renal-diluting sites (most commonly because of the use of diuretics),³⁸ the presence of vasopressin,^{39,40} or, rarely, an inherited activating mutation of the vasopressin receptor.⁴¹ Because vasopressin, along with renin, angiotensin, aldosterone, and the sympathetic nervous system, participates in the neurohumoral response to inadequate circulation,³³ vasopressin-mediated hyponatremia may complicate hypovolemia or states that lead to edema (e.g., heart failure and cirrhosis).⁴⁰

Many causes of hyponatremia (e.g., hypovolemia, medications, cortisol deficiency, nausea, pain,

or stress) are reversible — either by treatment or the passage of time.³⁹ Once the cause of hyponatremia resolves, the normal osmoreceptor response to a low plasma sodium concentration inhibits vasopressin secretion, resulting in excretion of maximally dilute urine and resolution of hyponatremia.^{42,43}

Administration of a vasopressin antagonist will also result in the excretion of dilute urine (also known as a “water diuresis” or “aquaresis”) despite the continued presence of vasopressin. Therefore, vasopressin antagonists increase the plasma sodium concentration and are approved by the Food and Drug Administration for the treatment of hyponatremia caused by the syndrome of inappropriate antidiuretic hormone secretion (SIADH) or by heart failure.⁴⁴

URINARY SODIUM AND THE PLASMA SODIUM CONCENTRATION

Urinary excretion of sodium is relatively independent of plasma sodium levels; measurement of urinary sodium levels can help to distinguish between SIADH and hypovolemic hyponatremia.^{34,45,46} Excretion of sodium responds to intravascular volume, increasing with volume expansion and decreasing with volume depletion. Water retention due to SIADH expands extracellular fluid volume, resulting in increased urinary excretion of sodium despite hyponatremia.⁴⁷

Excretion of sodium in SIADH restores normal extracellular volume, but hypertonic urinary losses also exacerbate hyponatremia.⁴⁸ For this reason, SIADH should not be treated with isotonic solutions such as 0.9% saline or Ringer’s lactate, because infused sodium will be excreted in smaller volumes of urine, leading to net retention of electrolyte-free water. Such a sequence is common in patients with subarachnoid hemorrhage; saline is prescribed to maintain cerebral perfusion, but vasopressin released by neurologic injury concentrates the urine (see Case 2 in the Supplementary Appendix).^{49,50}

CAUSES OF RAPID CHANGES IN THE PLASMA SODIUM CONCENTRATION

The plasma sodium concentration will decrease rapidly if the amount of water ingested or infused exceeds the capacity of the kidneys to excrete free water. The plasma sodium concentration increas-

es rapidly if large amounts of concentrated salt are ingested or infused or if there are large, unreplaced losses of electrolyte-free water because of aquaresis or osmotic diuresis (most commonly due to glycosuria). Loss or gain of approximately 3 ml of water per kilogram of body weight will change the plasma sodium concentration by approximately 1 mmol per liter.⁵¹ Maximally dilute urine, whether resulting from untreated diabetes insipidus, spontaneous recovery from hyponatremia, or administration of a vasopressin antagonist, will increase the plasma sodium concentration by about 2.5 mmol per liter per hour. In the absence of urinary loss of water, 1 ml of 3% saline per kilogram of body weight will increase the plasma sodium concentration by about 1 mmol per liter.⁵¹ Therefore, in a woman with a body weight of 50 kg, the increase in the plasma sodium level caused by a maximum water diuresis is similar to the increase caused by infusion of approximately 125 ml of 3% saline per hour.

CONSEQUENCES OF AN ABNORMAL PLASMA SODIUM CONCENTRATION

Extreme hypotonicity ruptures cell membranes; extreme hypertonicity damages the cytoskeleton and causes breaks in DNA, ultimately leading to apoptosis.⁵² Given time, cells protect their volume and their survival by adjusting intracellular solute contents.⁵³

Organic osmolytes are small intracellular molecules (e.g., glutamate, taurine, and myo-inositol) that are found throughout nature; their concentrations can vary without perturbing cell functions.⁵⁴ Hypotonicity promotes the release of osmolytes from cells through volume-sensitive leak pathways, while, concurrently, osmolyte-accumulating transporters (e.g., the taurine transporter TauT and the myo-inositol transporter SMIT) are down-regulated. With hypertonicity, TauT and SMIT are up-regulated.^{53,54} These adaptations allow cells to maintain intracellular solute concentrations that are equal to the osmolality of hypotonic or hypertonic plasma, with little change in cell volume.^{53,54}

Although osmotic disturbances affect all cells, clinical manifestations of hyponatremia and hypernatremia are primarily neurologic, and rapid changes in plasma sodium concentrations in either direction can cause severe, permanent, and

sometimes lethal brain injury (Tables 1 and 2 and Fig. 3).^{39,40} If severe hypernatremia develops over a period of minutes (e.g., after massive ingestion of salt that may occur in a suicide attempt), vascular injury created by a suddenly shrinking brain causes intracranial hemorrhage. Brain swelling from an abrupt onset of hyponatremia results in increased intracranial pressure, impairing cerebral blood flow and sometimes causing herniation (Fig. 3). Adaptive changes in brain osmolytes permit survival, but they may also contribute to symptoms.⁵⁵ For example, in acute hyponatremia, adaptive release of glutamate, an excitatory neurotransmitter, may increase the susceptibility to seizures; depletion of the transmitter from nerve terminals may account for some of the neurologic symptoms of chronic hyponatremia.⁵⁵

The foot processes of astrocytes, which encircle both brain capillaries and neurons, express aquaporins (such as aquaporin-4) that allow water to cross the blood-brain barrier.² Astrocytes protect neurons from osmotic stress; in response to hypotonicity, a cell-to-cell transfer of taurine to adjacent astrocytes allows neurons to maintain their volume while astrocytes swell.⁵⁶ Within 24 to 48 hours after this transfer, astrocytes restore their volume through loss of organic osmolytes, but this makes them vulnerable to injury from rapid normalization of the plasma sodium concentration. Because of the down-regulation of transporters, recovery of lost brain osmolytes may take a week or longer.^{55,56} Therefore, rapid correction of hyponatremia is a hypertonic stress to astrocytes that are depleted of osmolytes, triggering apoptosis, disruption of the blood-brain barrier, and, eventually, brain demyelination⁵⁷ (see the Supplementary Appendix). In experiments in animals, brain demyelination has been prevented by repletion of myo-inositol,⁵⁸ by lowering the plasma sodium concentration again promptly (within 12 to 24 hours after rapid correction of hyponatremia),⁵⁹ or by administration of minocycline (which prevents proliferation of glial cells).⁶⁰

Brain injury after rapid correction of chronic hyponatremia manifests as a biphasic illness called the osmotic demyelination syndrome: an initial reduction in symptoms is followed by a gradual onset of new neurologic findings (see Case 3 in the Supplementary Appendix).⁶¹ The clinical spectrum of the osmotic demyelination syndrome is broad and can include seizures, behavioral abnormalities, and movement disorders.⁶² The most se-

Table 1. Treatment and Limits of Correction of Severe Hyponatremia.*

| Duration | Related Behavior or Condition | Clinical Features | Initial Therapeutic Goal | Limit of Correction and Management of Overcorrection |
|--------------------|---|---|---|--|
| Several hours | Self-induced water intoxication associated with psychosis, running in marathons, use of 3,4-methylenedioxy-methamphetamine (MDMA, or “ecstasy”) | Headache, delirium, vomiting, seizures, coma, neurogenic pulmonary edema, brain swelling with risk of fatal herniation | 100-ml bolus of 3% saline three times as needed for severe symptoms; increase plasma sodium concentration by 4–6 mmol/liter in first 6 hr | Excessive correction not known to be harmful |
| 1–2 days | Postoperative hyponatremia, especially in women and children; hyponatremia associated with intracranial disease | Headache, delirium, vomiting, seizures, coma, neurogenic pulmonary edema, brain swelling with risk of fatal herniation | 100-ml bolus of 3% saline three times as needed for severe symptoms; increase plasma sodium concentration by 4–6 mmol/liter in first 6 hr | Avoid increasing plasma sodium concentration by >10 mmol/liter/day |
| Unknown or ≥2 days | Conditions associated with high risk of the osmotic demyelination syndrome (plasma sodium concentration, 105 mmol/liter or less; hypokalemia, alcoholism, malnutrition, liver disease) [†] | Malaise, fatigue, confusion, cramps, falls, 10% incidence of seizures with plasma sodium concentration <110 mmol/liter, minimal brain swelling, and no risk of herniation | Extra caution indicated for conditions associated with high risk of osmotic demyelination syndrome; 100-ml bolus of 3% saline if needed for seizures; increase plasma sodium concentration by 4–6 mmol/liter in first 24 hr | Avoid increasing plasma sodium concentration by >8 mmol/liter/day; consider lowering again if limit is exceeded, especially in patients with high risk of the osmotic demyelination syndrome |

* Severe hyponatremia is defined as a plasma sodium concentration below 120 mmol per liter. In the absence of urinary loss of water, 1 ml of 3% saline per kilogram of body weight will increase the plasma sodium concentration by approximately 1 mmol per liter.

[†] The osmotic demyelination syndrome may develop when the plasma sodium concentration is increased rapidly in outpatients who became hyponatremic while drinking normal amounts of water and in hospitalized patients who became hyponatremic over 2 or more days.

verely affected patients become “locked in,” unable to move, speak, or swallow because of demyelination of the central pons. Although osmotic demyelination may cause permanent disability or death, many patients — even those who require ventilator support — have a full functional recovery.⁶³ Acute hypernatremia may also cause brain demyelination, without the biphasic clinical course of the osmotic demyelination syndrome (Fig. 3).^{64,65}

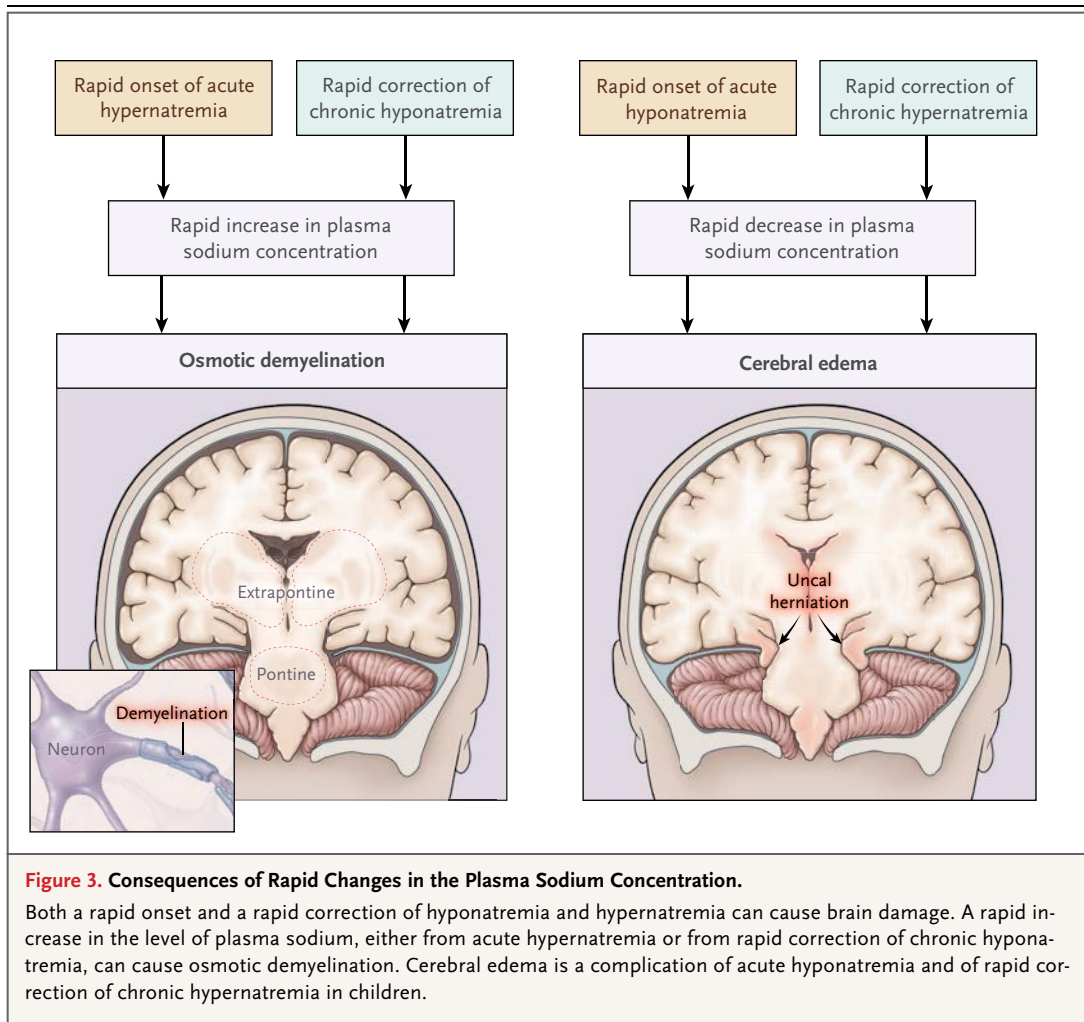
Chronic hypernatremia, like chronic hyponatremia, causes a reversible encephalopathy. Particularly in infants, organic osmolytes gained in the adaptation to chronic hypernatremia are lost slowly. Therefore, rehydration resulting in rapid correction of chronic hypernatremia causes seizures and a bulging fontanelle indicating cerebral edema (Fig. 3).^{35,66,67}

A plasma sodium concentration that is even slightly outside the normal range increases the risk of death,⁶⁸ but few deaths associated with abnormalities in the plasma sodium concentration are related to neurologic complications.⁶⁹ The underlying disorders that produce an abnormal plasma sodium concentration may be responsible for excess mortality, but there may also be non-neurologic adverse consequences of pro-

longed osmotic disturbances, and observational studies have shown decreased mortality among hospitalized patients in whom the plasma sodium concentration was corrected.⁷⁰ Taurine and myoinositol, organic osmolytes that are lost from many cells in the adaptation to hyponatremia, are normally protective against oxidative injury.⁵⁴ An experimental model of chronic SIADH in rats showed that prolonged hyponatremia resulted in hypogonadism, loss of body fat, skeletal-muscle sarcopenia, and cardiomyopathy.⁷¹

CORRECTION OF AN ABNORMAL PLASMA SODIUM CONCENTRATION

Clinicians who treat patients with hyponatremia and hypernatremia should respond promptly to the immediate dangers posed by an acute disturbance, while being mindful of adaptations that make excessive correction potentially harmful. Aggressive interventions are indicated when the plasma sodium concentration has decreased or increased rapidly or when an abnormal plasma sodium concentration is causing severe symptoms. Therapy should be guided by frequent monitoring of the plasma sodium concentration and not by formulas alone.⁴³



Fatal brain swelling — a rare complication of hyponatremia that clinicians are most concerned about — has only been reported in hyponatremic patients with intracranial disease and in a few specific conditions that cause the plasma sodium concentration to decrease rapidly, such as postoperative hyponatremia and self-induced water intoxication that develops over a few hours (Table 1). Because the brain cannot swell by much more than 5%, correction of hyponatremia by this amount would be expected to prevent the most serious complications of acute water intoxication; empirical observations support this prediction. An increase in the plasma sodium concentration of 4 to 6 mmol per liter is enough to reverse impending brain herniation or stop active seizures in patients with severe acute hyponatremia. Such an increase can be reliably

achieved with 100-ml bolus infusions of 3% saline (2 ml per kilogram in small patients), administered at 10-minute intervals to a total of three doses, if necessary, to control symptoms.³⁹ Milder symptoms of acute hyponatremia should be treated with enough 3% saline to avoid a worsening of hyponatremia because of delayed absorption of ingested water or excretion of hypertonic urine.⁷²

Hyponatremia is usually a chronic condition and it should be presumed to be chronic when the actual duration is unclear; to reduce symptoms and improve potential outcomes, chronic hyponatremia should be corrected gradually with the use of fluid restriction, salt tablets, slow infusions of 3% saline, furosemide, urea, or vasopressin antagonists, or by treatment of the underlying cause. Severe symptoms of hyponatremia may require

Table 2. Treatment and Limits of Correction of Severe Hypernatremia.*

| Duration | Related Behavior or Condition | Clinical Features | Initial Therapeutic Goal | Limit of Correction and Management of Overcorrection |
|--------------------|---|---|--|---|
| Minutes to hours | Acute salt poisoning associated with accidental salt ingestion or salt ingestion in attempted suicide, use of parenteral hypertonic saline, dialysis errors | Seizures, coma, hypertonia, high fever, intracranial hemorrhages, thrombosis of dural sinuses | Rapid infusion of 5% dextrose in water plus emergency hemodialysis to immediately restore normonatremia | Excessive correction not known to be harmful |
| 1–2 days | Unreplaced water from urinary losses associated with glycosuria, neurogenic or nephrogenic diabetes insipidus | Persistent coma, brain demyelination | Decrease plasma sodium concentration by 2 mmol/liter/hr until plasma sodium concentration is 145 mmol/liter; stop or replace water losses | Excessive correction not known to be harmful |
| Unknown or ≥2 days | In children: diarrhea, inability to breast-feed; in adults: hypodipsia, impaired mental status | Obtundation or coma, rehydration-associated seizures and cerebral edema as a result of rapid correction in children | In children: decrease plasma sodium concentration by 0.3 mmol/liter/hr; in adults: decrease plasma sodium concentration by 10 mmol/liter/day; replace water losses | In children: avoid decreasing plasma sodium concentration by >0.5 mmol/liter/hr; 3% saline for seizures associated with rehydration; in adults: not known |

* Severe hypernatremia is defined as a plasma sodium concentration above 150 mmol per liter. In the absence of urinary loss of water, 3 ml of electrolyte-free water per kilogram of body weight will decrease the plasma sodium concentration by approximately 1 mmol per liter.

more aggressive initial interventions, but there is no need to increase the plasma sodium concentration by more than 4 to 6 mmol per liter per day. Regardless of how chronic hyponatremia is treated, inadvertent overcorrection, most commonly caused by excretion of dilute urine, is common and can be very dangerous (see Case 3 in the Supplementary Appendix).^{42,43} If the plasma sodium concentration is less than 120 mmol per liter, or if there are risk factors for osmotic demyelination, correction of the plasma sodium concentration by more than 8 mmol per liter per day should be meticulously avoided through replacement of lost water or prevention of water loss with desmopressin, a synthetic vasopressin.^{42,73}

Repeat therapeutic lowering of the plasma sodium concentration is justified if the correction of hyponatremia exceeds 8 mmol per liter per day and there are risk factors for osmotic demyelination or if the correction is 10 to 12 mmol per liter per day without these risk factors (Table 1)^{39,40,74,75} — although the benefit of this strategy has not been confirmed in humans. To prevent inadvertent overcorrection (see Case 4 in the Supplementary Appendix), desmopressin can be administered preemptively, in anticipation of, rather than in response to, unwelcome urinary

losses of water; hyponatremia is corrected with a slow infusion of 3% saline while the urine is kept concentrated with repeated doses of desmopressin.⁷³

Limiting correction of chronic hypernatremia so that the plasma sodium concentration is decreased by less than 0.5 mmol per liter per hour reduces the risk of cerebral edema and seizures associated with rehydration.⁶⁶ However, the fear of these complications, which have been reported only in young children, should not deter the aggressive rehydration of adults with acute hypernatremia to avoid brain hemorrhage or osmotic demyelination (Table 2).⁷⁶ In contrast to the risk of inadvertent overcorrection in patients with hyponatremia, there is little risk of inadvertent overcorrection in patients with hypernatremia, and adults with hypernatremia are often undertreated.^{77,78}

CONCLUSIONS

Disorders of plasma sodium concentration expose cells to hypotonic or hypertonic stress. Although all cells are affected, clinical manifestations of hyponatremia and hypernatremia are primarily neurologic, and rapid changes in plasma sodium concentrations in either direction can

cause severe, permanent, and sometimes lethal brain injury. Because the brain adapts to an abnormal plasma sodium level, excessive correction of a chronic disturbance can be injurious and should be avoided.

No potential conflict of interest relevant to this article was reported.

Disclosure forms provided by the author are available with the full text of this article at NEJM.org.

REFERENCES

- Bhave G, Neilson EG. Body fluid dynamics: back to the future. *J Am Soc Nephrol* 2011;22:2166-81.
- Day RE, Kitchen P, Owen DS, et al. Human aquaporins: regulators of transcellular water flow. *Biochim Biophys Acta* 2014;1840:1492-506.
- Edelman IS, Leibman J, O'Meara MP, Birkenfeld LW. Interrelations between serum sodium concentration, serum osmolality and total exchangeable sodium, total exchangeable potassium and total body water. *J Clin Invest* 1958;37:1236-56.
- Nguyen MK, Kurtz I. Reply to: Wessler LB. The Edelman equation as it applies to acute and chronic hyponatremia. *Am J Physiol Regul Integr Comp Physiol* 2012;302:R899-R901.
- Urban JP. The chondrocyte: a cell under pressure. *Br J Rheumatol* 1994;33:901-8.
- Cannon WB. Organization for physiological homeostasis. *Physiol Rev* 1929;9:399-431.
- Forbes GB, Tobin RB, Harrison A, McCoord A. Effect of acute hypernatremia, hyponatremia, and acidosis on bone sodium. *Am J Physiol* 1965;209:825-9.
- Stormont JM, Waterhouse C. The genesis of hyponatremia associated with marked overhydration and water intoxication. *Circulation* 1961;24:191-203.
- Farber SJ. Mucopolysaccharides and sodium metabolism. *Circulation* 1960;21:941-7.
- Wynn V. The osmotic behaviour of the body cells in man; significance of changes of plasma-electrolyte levels in body-fluid disorders. *Lancet* 1957;273:1212-8.
- Titze J, Dahlmann A, Lerchl K, et al. Spooky sodium balance. *Kidney Int* 2014;85:759-67.
- Heer M, Baisch F, Kropp J, Gerzer R, Drummer C. High dietary sodium chloride consumption may not induce body fluid retention in humans. *Am J Physiol Renal Physiol* 2000;278:F585-F595.
- Noakes TD, Sharwood K, Speedy D, et al. Three independent biological mechanisms cause exercise-associated hyponatremia: evidence from 2,135 weighed competitive athletic performances. *Proc Natl Acad Sci U S A* 2005;102:18550-5.
- Titze J, Lang R, Iliés C, et al. Osmotically inactive skin Na⁺ storage in rats. *Am J Physiol Renal Physiol* 2003;285:F1108-F1117.
- Titze J, Shakibaei M, Schafflhuber M, et al. Glycosaminoglycan polymerization may enable osmotically inactive Na⁺ storage in the skin. *Am J Physiol Heart Circ Physiol* 2004;287:H203-H208.
- Wiig H, Schröder A, Neuhofer W, et al. Immune cells control skin lymphatic electrolyte homeostasis and blood pressure. *J Clin Invest* 2013;123:2803-15.
- Hannon MJ, Verbalis JG. Sodium homeostasis and bone. *Curr Opin Nephrol Hypertens* 2014;23:370-6.
- Hew-Butler T, Stuempfle KJ, Hoffman MD. Bone: an acute buffer of plasma sodium during exhaustive exercise? *Horm Metab Res* 2013;45:697-700.
- Rose BD. New approach to disturbances in the plasma sodium concentration. *Am J Med* 1986;81:1033-40.
- Berl T. Impact of solute intake on urine flow and water excretion. *J Am Soc Nephrol* 2008;19:1076-8.
- Popli S, Tzamaloukas AH, Ing TS. Osmotic diuresis-induced hypernatremia: better explained by solute-free water clearance or electrolyte-free water clearance? *Int Urol Nephrol* 2014;46:207-10.
- Lindner G, Schwarz C, Funk GC. Osmotic diuresis due to urea as the cause of hypernatraemia in critically ill patients. *Nephrol Dial Transplant* 2012;27:962-7.
- Decaux G, Andres C, Gankam Kengne F, Soupert A. Treatment of euvolemic hyponatremia in the intensive care unit by urea. *Crit Care* 2010;14:R184.
- Soupert A, Coffernils M, Couturier B, Gankam-Kengne F, Decaux G. Efficacy and tolerance of urea compared with vapants for long-term treatment of patients with SIADH. *Clin J Am Soc Nephrol* 2012;7:742-7.
- Levick JR, Michel CC. Microvascular fluid exchange and the revised Starling principle. *Cardiovasc Res* 2010;87:198-210.
- Abbott NJ, Friedman A. Overview and introduction: the blood-brain barrier in health and disease. *Epilepsia* 2012;53:Suppl 6:1-6.
- Bichet DG. Physiopathology of hereditary polyuric states: a molecular view of renal function. *Swiss Med Wkly* 2012;142:w13613.
- Bourque CW. Central mechanisms of osmosensation and systemic osmoregulation. *Nat Rev Neurosci* 2008;9:519-31.
- Sladek CD, Johnson AK. Integration of thermal and osmotic regulation of water homeostasis: the role of TRPV channels. *Am J Physiol Regul Integr Comp Physiol* 2013;305:R669-R678.
- Tian W, Fu Y, Garcia-Elias A, et al. A loss-of-function nonsynonymous polymorphism in the osmoregulatory TRPV4 gene is associated with human hyponatremia. *Proc Natl Acad Sci U S A* 2009;106:14034-9.
- Zhang Z, Duckart J, Slatore CG, et al. Individuality of the plasma sodium concentration. *Am J Physiol Renal Physiol* 2014;306:F1534-F1543.
- Balanescu S, Kopp P, Gaskill MB, Morgenthaler NG, Schindler C, Ruttishauer J. Correlation of plasma copeptin and vasopressin concentrations in hypo-, iso-, and hyperosmolar states. *J Clin Endocrinol Metab* 2011;96:1046-52.
- Antunes-Rodrigues J, de Castro M, Elias LL, Valença MM, McCann SM. Neuroendocrine control of body fluid metabolism. *Physiol Rev* 2004;84:169-208.
- Ellison DH, Berl T. The syndrome of inappropriate antidiuresis. *N Engl J Med* 2007;356:2064-72.
- Adrogué HJ, Madias NE. Hypernatremia. *N Engl J Med* 2000;342:1493-9.
- Atsariyasing W, Goldman MB. A systematic review of the ability of urine concentration to distinguish antipsychotic from psychosis-induced hyponatremia. *Psychiatry Res* 2014;217:129-33.
- Bhattarai N, Kafle P, Panda M. Beer potomania: a case report. *BMJ Case Rep* 2010. DOI: 10.1136/bcr.10.2009.2414.
- Hix JK, Silver S, Sterns RH. Diuretic-associated hyponatremia. *Semin Nephrol* 2011;31:553-66.
- Sterns RH, Nigwekar SU, Hix JK. The treatment of hyponatremia. *Semin Nephrol* 2009;29:282-99.
- Adrogué HJ, Madias NE. The challenge of hyponatremia. *J Am Soc Nephrol* 2012;23:1140-8.
- Vandergheynst F, Brachet C, Heinrichs C, Decaux G. Long-term treatment of hyponatremic patients with nephrogenic syndrome of inappropriate antidiuresis: personal experience and review of published case reports. *Nephron Clin Pract* 2012;120:c168-c172.
- Perianayagam A, Sterns RH, Silver SM, et al. DDAVP is effective in preventing and reversing inadvertent overcorrection of hyponatremia. *Clin J Am Soc Nephrol* 2008;3:331-6.
- Mohmand HK, Issa D, Ahmad Z, Cappuccio JD, Kouides RW, Sterns RH. Hypertonic saline for hyponatremia: risk of inadvertent overcorrection. *Clin J Am Soc Nephrol* 2007;2:1110-7.

44. Lehigh RW, Ortiz-Melo DI, Patel MB, Greenberg A. Role of vaptans in the management of hyponatremia. *Am J Kidney Dis* 2013;62:364-76.
45. Fenske W, Allolio B. The syndrome of inappropriate secretion of antidiuretic hormone: diagnostic and therapeutic advances. *Horm Metab Res* 2010;42:691-702.
46. Fenske W, Maier SK, Blechschmidt A, Allolio B, Störk S. Utility and limitations of the traditional diagnostic approach to hyponatremia: a diagnostic study. *Am J Med* 2010;123:652-7. [Erratum, *Am J Med* 2011;124(10):e9.]
47. Leaf A, Bartter FC, Santos RF, Wrong O. Evidence in man that urinary electrolyte loss induced by pitressin is a function of water retention. *J Clin Invest* 1953;32:868-78.
48. Steele A, Gowrishankar M, Abrahamson S, Mazer CD, Feldman RD, Halperin ML. Postoperative hyponatremia despite near-isotonic saline infusion: a phenomenon of desalination. *Ann Intern Med* 1997;126:20-5.
49. Hannon MJ, Behan LA, O'Brien MM, et al. Hyponatremia following mild/moderate subarachnoid hemorrhage is due to SIAD and glucocorticoid deficiency and not cerebral salt wasting. *J Clin Endocrinol Metab* 2014;99:291-8.
50. Sterns RH, Silver SM. Cerebral salt wasting versus SIADH: what difference? *J Am Soc Nephrol* 2008;19:194-6.
51. Sterns RH, Silver SM. Salt and water: read the package insert. *QJM* 2003;96:549-52.
52. Burg MB, Ferraris JD, Dmitrieva NI. Cellular response to hyperosmotic stresses. *Physiol Rev* 2007;87:1441-74.
53. Strange K. Cellular volume homeostasis. *Adv Physiol Educ* 2004;28:155-9.
54. Yancey PH. Organic osmolytes as compatible, metabolic and counteracting cytoprotectants in high osmolarity and other stresses. *J Exp Biol* 2005;208:2819-30.
55. Verbalis JG. Brain volume regulation in response to changes in osmolality. *Neuroscience* 2010;168:862-70.
56. Pasantes-Morales H, Cruz-Rangel S. Brain volume regulation: osmolytes and aquaporin perspectives. *Neuroscience* 2010;168:871-84.
57. Gankam Kengne F, Nicaise C, Soupart A, et al. Astrocytes are an early target in osmotic demyelination syndrome. *J Am Soc Nephrol* 2011;22:1834-45.
58. Silver SM, Schroeder BM, Sterns RH, Rojiani AM. Myo-inositol administration improves survival and reduces myelinolysis after rapid correction of chronic hyponatremia in rats. *J Neuropathol Exp Neurol* 2006;65:37-44.
59. Gankam Kengne F, Soupart A, Pochet R, Brion JP, Decaux G. Re-induction of hyponatremia after rapid overcorrection of hyponatremia reduces mortality in rats. *Kidney Int* 2009;76:614-21.
60. Takagi H, Sugimura Y, Suzuki H, et al. Minocycline prevents osmotic demyelination associated with aquaresis. *Kidney Int* 2014;86:954-64.
61. Sterns RH, Riggs JE, Schochet SS Jr. Osmotic demyelination syndrome following correction of hyponatremia. *N Engl J Med* 1986;314:1535-42.
62. de Souza A, Desai PK. More often striatal myelinolysis than pontine? A consecutive series of patients with osmotic demyelination syndrome. *Neurol Res* 2012;34:262-71.
63. Louis G, Megarbane B, Lavoué S, et al. Long-term outcome of patients hospitalized in intensive care units with central or extrapontine myelinolysis. *Crit Care Med* 2012;40:970-2.
64. Ismail FY, Szóllics A, Szóllics M, Nagelkerke N, Ljubisavljevic M. Clinical semiology and neuroradiologic correlates of acute hypernatremic osmotic challenge in adults: a literature review. *AJNR Am J Neuroradiol* 2013;34:2225-32.
65. Soupart A, Penninckx R, Namias B, Stenuit A, Perier O, Decaux G. Brain myelinolysis following hypernatremia in rats. *J Neuropathol Exp Neurol* 1996;55:106-13.
66. Bolat F, Oflaz MB, Güven AS, et al. What is the safe approach for neonatal hypernatremic dehydration? A retrospective study from a neonatal intensive care unit. *Pediatr Emerg Care* 2013;29:808-13.
67. Lee JH, Arcinue E, Ross BD. Organic osmolytes in the brain of an infant with hypernatremia. *N Engl J Med* 1994;331:439-42.
68. Corona G, Giuliani C, Parenti G, et al. Moderate hyponatremia is associated with increased risk of mortality: evidence from a meta-analysis. *PLoS One* 2013;8(12):e80451.
69. Chawla A, Sterns RH, Nigwekar SU, Cappuccio JD. Mortality and serum sodium: do patients die from or with hyponatremia? *Clin J Am Soc Nephrol* 2011;6:960-5.
70. Waikar SS, Mount DB, Curhan GC. Mortality after hospitalization with mild, moderate, and severe hyponatremia. *Am J Med* 2009;122:857-65.
71. Barsony J, Manigrasso MB, Xu Q, Tam H, Verbalis JG. Chronic hyponatremia exacerbates multiple manifestations of senescence in male rats. *Age (Dordr)* 2013;35:271-88.
72. Bhaskar E, Kumar B, Ramalakshmi S. Evaluation of a protocol for hypertonic saline administration in acute euvoletic symptomatic hyponatremia: a prospective observational trial. *Indian J Crit Care Med* 2010;14:170-4.
73. Sood L, Sterns RH, Hix JK, Silver SM, Chen L. Hypertonic saline and desmopressin: a simple strategy for safe correction of severe hyponatremia. *Am J Kidney Dis* 2013;61:571-8.
74. Spasovski G, Vanholder R, Allolio B, et al. Clinical practice guideline on diagnosis and treatment of hyponatraemia. *Nephrol Dial Transplant* 2014;29:Suppl 2:i1-i39.
75. Verbalis JG, Goldsmith SR, Greenberg A, et al. Diagnosis, evaluation, and treatment of hyponatremia: expert panel recommendations. *Am J Med* 2013;126:Suppl 1:S1-S42.
76. Carlberg DJ, Borek HA, Syverud SA, Holstege CP. Survival of acute hypernatremia due to massive soy sauce ingestion. *J Emerg Med* 2013;45:228-31.
77. Alshayeb HM, Showkat A, Babar F, Mangold T, Wall BM. Severe hypernatremia correction rate and mortality in hospitalized patients. *Am J Med Sci* 2011;341:356-60.
78. Bataille S, Baralla C, Torro D, et al. Undercorrection of hypernatremia is frequent and associated with mortality. *BMC Nephrol* 2014;15:37. 10.1186/1471-2369-15-37.

Copyright © 2015 Massachusetts Medical Society.